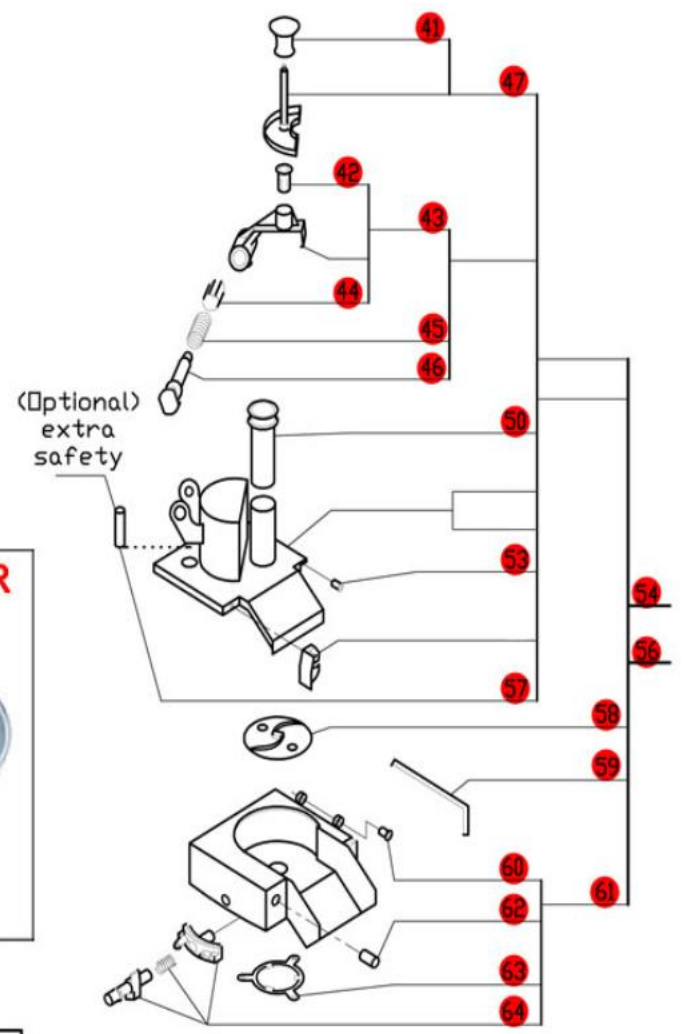
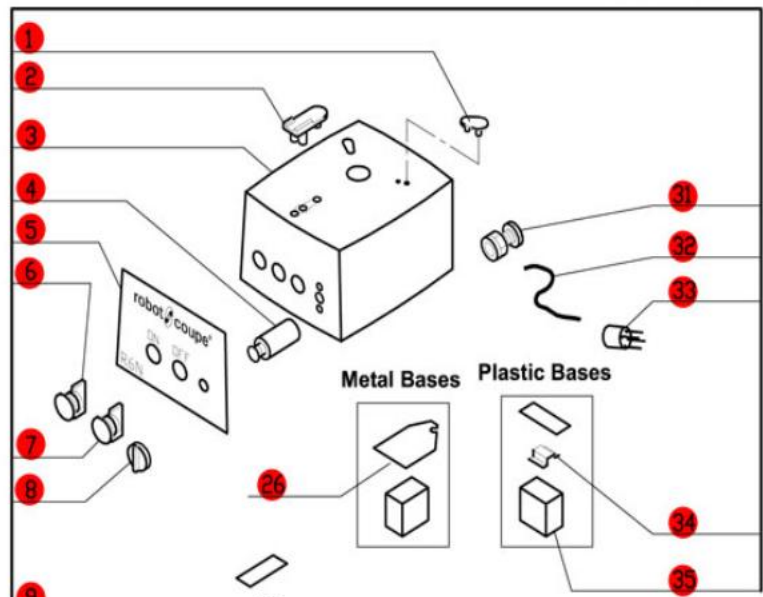
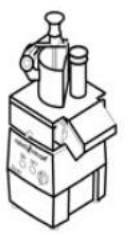


R6C Series A

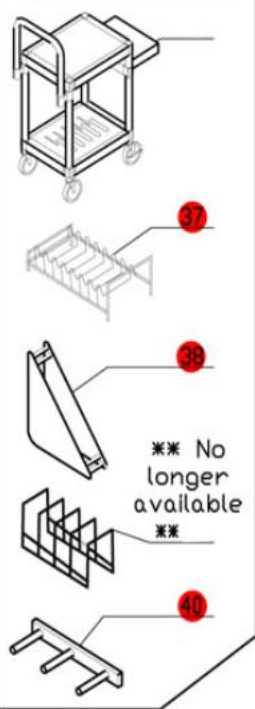
Series A, Serial Numbers R6NxxxxxA
 2-Speed, 208-240 Volt, 3 Phase, 60Hz., 1 HP.
 Low Speed-850 RPM, 7.6 Amps
 High Speed-1725 RPM, 2.8 Amps
 Use C Designated Plates.



CLICK HERE FOR DISCS

ACCESSORIES

NOTE: Use "C" designated plates.



* RA604D old style motor is no longer available.
 Order S193379, 29620, R611, 117770, and four BX658 screws.

Do not order baffle if you have a plastic base.

- 22 metal
- 23 plastic
- 24
- 25

**Click on Red Dot
 OR
 Call us
 800-465-6060**